

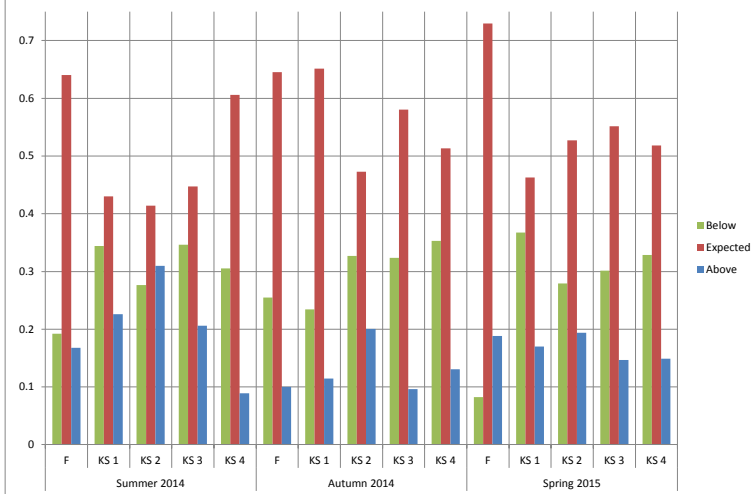
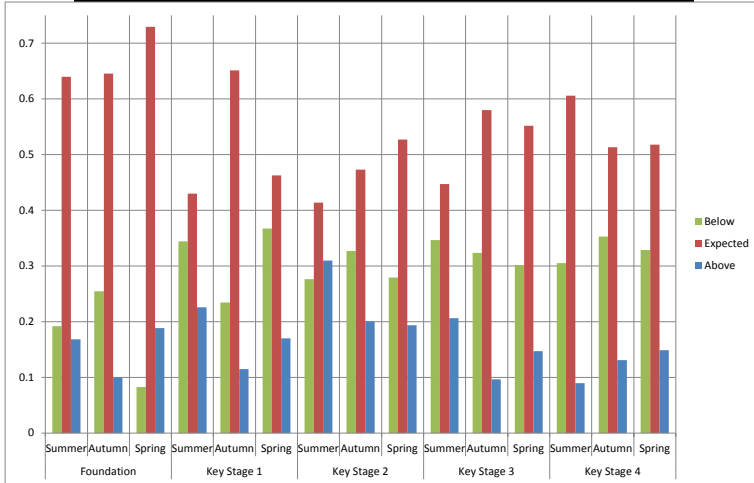
Reporting Card Virtual School Staffordshire LAC

Data as of 6th November 2015

Percentage of Returns	
Summer 2014	95%
Autumn 2014	90%
Spring 2015	65%

Average Attendance	
Summer Term	95.4%
Autumn Term	95.4%
Spring Term	96.0%
Whole Year	95.6%

Academic Progress of Staffordshire LAC 2014-2015



Pupil Premium Allocation	
Summer:	373 children receiver: £ 279,750.00
Autumn:	445 children receiver: £ 222,500.00
Spring:	353 children receiver: £ 229,450.00
Total:	1171 returns £ 731,700.00

The Pupil Premium has been spent:
 63% on Academic Progress
 29% on Behaviour/Emotional Support
 3% on Alternative Provision
 3% on Academic Progress Out Of School
 2% on Other

Children by Key Stage
 Foundation 64 children
 Key Stage 1 144 children
 Key Stage 2 452 children
 Key Stage 3 264 children
 Key Stage 4 247 children

Intervention and Outcome Examples

Academic Progress:
 "Purchase of laptop to consolidate learning at home and school" Year 6
 "One to One support in all subjects to raise attainment to expected levels" Year 10

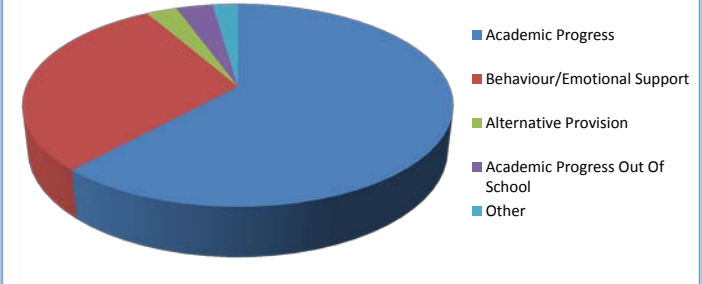
Behaviour and Emotional Support:
 "One to One support to establish routines with familiar staff prior to mainstream transition" Year

Alternative Provision:
 "One to One mentoring to secure a placement at NACRO and re-engage with education" Year 11
 "To attend a residential week and participate in activities away from home with peers" Year 6

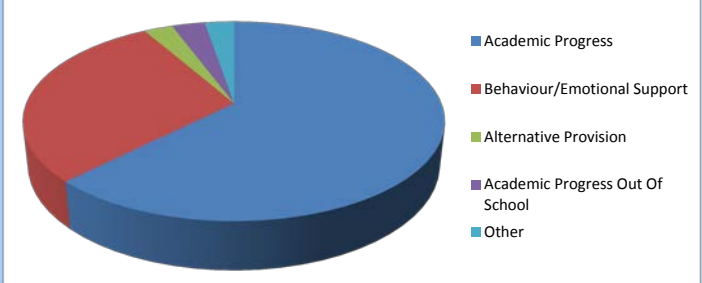
Academic Progress Out Of School:
 "Additional English and Maths support at Stafford Tuition Centre" Year 10
 "Purchase of a keyboard to improve self esteem" Year 7

Other:
 "Share of FLSW to support social development, unstructured times and links with agencies" Year
 "Breakfast club to support attendance, homework and health" Year 11

Usage of Pupil Premium Summer 2014



Usage of Pupil Premium Autumn 2014



Usage of Pupil Premium Spring 2015

